

# Welcome to ARCHICAD 23

ARCHICAD 23 delivers an even more responsive BIM performance by increasing the speed of everyday design and editing processes and ensuring uninterrupted routines for the most frequently used tasks. The brand-new Opening Tool and the advanced Column and Beam tools further increase modeling accuracy, enabling fast editing and streamlined, error-free, interdisciplinary design coordination.



Irina Winer-Usmanova Rhythmic Gymnastics Center in the Luzhniki Complex, Moscow, Russia | CPU PRIDE [www.prideproject.pro](http://www.prideproject.pro)

The ARCHICAD-Solibri connection provides fast and automated rule-based code- and constructability checking at any stage of the design process. The ARCHICAD-dRofus connection helps to capture and organize client planning requirements; categorize openings, finishes and equipment; validate design solutions and propose alternatives when designing large and complex projects.

# Design

ARCHICAD 23 enables architects to model faster and create accurate construction details and quantity estimations for reinforced concrete, complex steel, timber, composite, and beams.



Ludovika Arena, Budapest | Company: KÖZTI Zrt. - [www.kozti.hu](http://www.kozti.hu) | Architect: György Skardelli | Photo: Ugur Ceylan | [www.ugurceylan.com](http://www.ugurceylan.com)

Complex columns and curved, haunch, and castellated beams can now be created using extruded and multiple, tapered segments, and sub-elements. This enables designers to perform intuitive, push-and-pull editing operations in 2D and 3D model views.

Increased freedom of customization is ensured to meet graphic and representation standards. Beams and columns can be displayed with contour lines and/or reference axis, using various projected and symbolic views with editable cover fills.

# Performance

ARCHICAD 23 features faster response times compared to previous versions, as well as an increased focus on seamless and uninterrupted workflows.

Experience faster opening of projects, smaller file sizes, faster IFC import-export, and instant switching between tabs thanks to optimized CPU multi-threading operations. The rebuilding time of model views has also been reduced as ARCHICAD rebuilds only the changed elements, not the entire contents of the view.



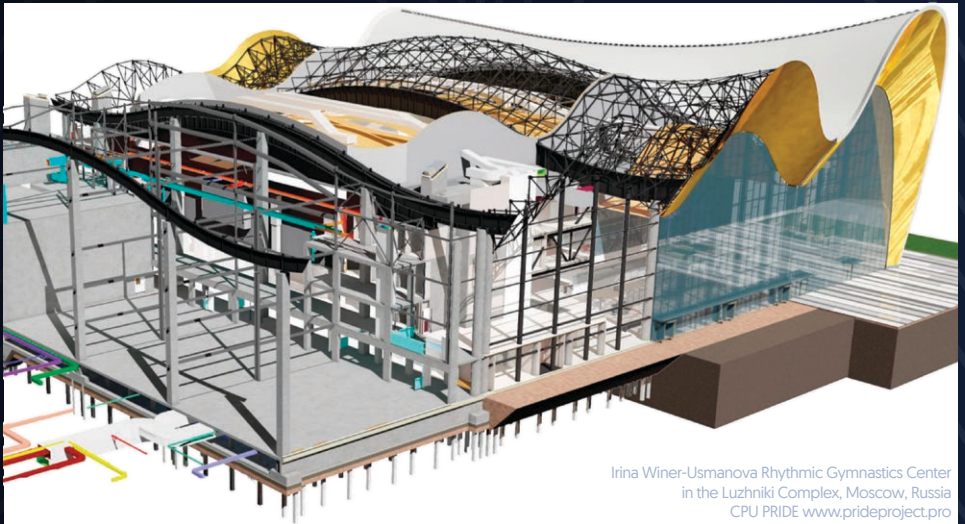
The new Startup Dialog displays the most recent projects; multiple projects can be opened with one click. Start your work in an instant, without any interrupting messages. Tab previews help activate the desired design views and prevent accidental display of unwanted tabs.



# Coordination

ARCHICAD 23 introduces the brand-new Opening Tool, dedicated to model and coordinate project design voids, recesses, and niches.

Voids – penetrating the entire structure, and niches and recesses – penetrating part of the structure, can be created as horizontal, vertical or slanted openings, across elements, element groups or even across stories.

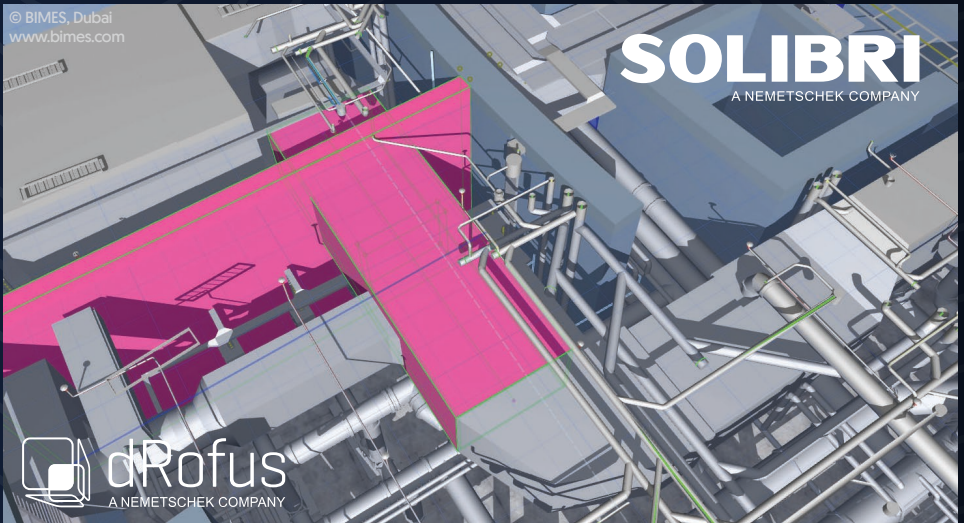


Such openings are critical for interdisciplinary project coordination as they are relevant for all parties: architects, engineers, and consultants. Exchanged many times between disciplines, these must be documented by the architects as well as by the structural engineers.

Openings can be modeled, scheduled, and documented using intuitive tools and exchanged using IFC.

# Collaboration

The **ARCHICAD-Solibri connection** provides fast and automated code- and constructability checking. The updated add-on automatically detects and sends only those elements in the ARCHICAD model that have been changed, resulting in faster round-trip collaboration; the quality of the data and the model is also improved.



The **ARCHICAD-dRofus connection** allows architects to capture and organize client planning requirements and use these to validate and propose design alternatives. The dRofus database enables designers to collect and handle planning rules and design data with ease, even when working on large and complex projects.

ARCHICAD 23 supports import of Bentley MicroStation's native, DGN v8 file format. DGN files are typically provided to architects by civil engineers, surveyors, and municipalities and contain information about the building site's surroundings, roads, and utilities. In many cases, the 3D survey models of factories are also made available to architects as DGN files.

ARCHICAD 23 fully supports IFC4 Reference View [its new entity and geometry representation types], and has received official buildingSMART certification for IFC4 Reference View Export.

# Productivity Enhancements

## # User Interface Enhancements

Shell and Morph Input Dialogs are simplified and icons help users to identify input fields. The Info Box panels of the Zone and Label tools are updated; Geometry- and Construction Methods can be displayed separately. Sunlight Settings provide live feedback about the cast- and self shadows, while Sun Study animations can be displayed with customizable date and time options, and location stamp.

## # New CineRender Engine

The new CineRender [R20] engine developed by Maxon allows quicker and cleaner rendering results, while the completely renewed, built-in Surface Catalog provides real reflections, with modernized textures.

## # Attribute Management

Surfaces with missing textures are indicated with a red texture icon; users also have the ability to sort attributes by missing textures.

## # View Settings Update

A unique identifier is used to rename the View Settings. Renaming the Layer Combinations, MVOs, Pen Sets, Renovation Filters, Graphic Override Combinations or 3D Styles no longer go missing.

## # Text Label Pointer Lines Options

A Text Label pointer line can now be attached exactly where it is needed: connected to the box or to the top/bottom text row; connected to the top, middle or bottom of the text box; or extended to underline the text.

## # Curtain Wall Enhancement

The new Curtain Wall enhancements include various options for a fixed window or louver sash. The Curtain Wall Profiled Edge Panels can now be moved to any position in the composite panel – even to the profile origin.

## # Integrated Software Key Activation & Deactivation

Automatic Software Key Activation and Manual Deactivation are now seamlessly integrated. If ARCHICAD can't find the right software key locally or on the network at startup, and the User is logged in to ARCHICAD with a valid GSID, the appropriate software key will be automatically acquired. The software key can be retrieved from the Help menu at any time.

# Getting started with ARCHICAD 23

ARCHICAD 23 is shipped electronically, through the web.

Please follow the steps below to download your copy of the software and the licenses necessary to run it:

1. Download ARCHICAD  
[graphisoft.com/downloads](http://graphisoft.com/downloads)
2. Run installation wizard. For help, visit: [graphisoft.com/install](http://graphisoft.com/install)
3. Create GRAPHISOFT ID (your personal identification)  
[graphisoftid.graphisoft.com](http://graphisoftid.graphisoft.com)
4. Run License Manager Tool (automatically installed with ARCHICAD 23) & sign-in with your GRAPHISOFT ID
5. Software Key holders, follow the instructions below:
  - a. Copy & Paste the Authentication Key received from your reseller in email
  - b. Select and download an ARCHICAD 23 license available for you from the list
6. Hardware Key holders, follow the instructions below:
  - a. Plug in your CodeMeter hardware key to the USB port on your machine
  - b. The License Manager Tool will prompt you to Update the license on your key
  - c. Press the Update Licenses button to download the license to your key

Troubleshooting: [graphisoft.com/install-ac23](http://graphisoft.com/install-ac23)

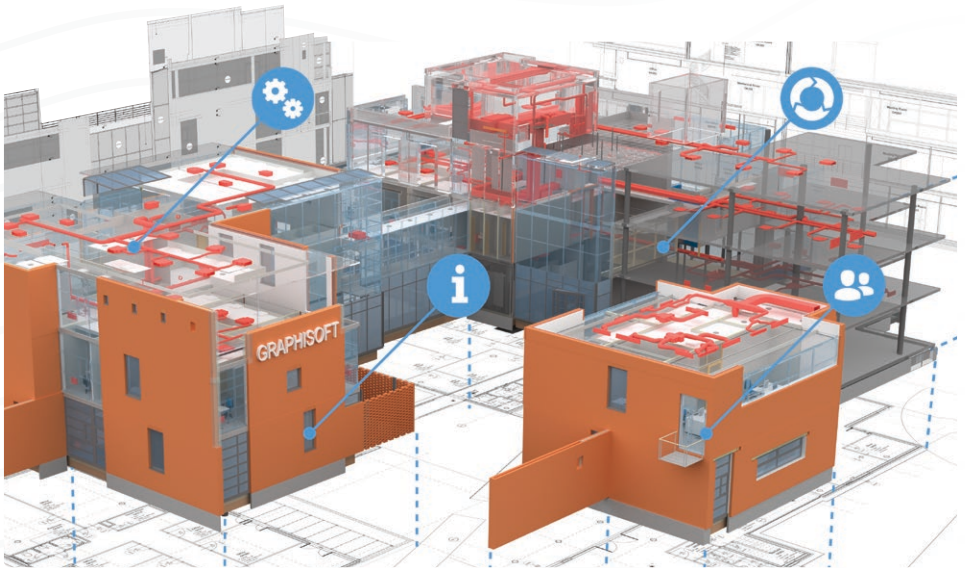
To replace your hardware key with a software key  
[graphisoft.com/key-replacement](http://graphisoft.com/key-replacement)

GRAPHISOFT.  
**ARCHICAD 23**



# Welcome to ARCHICAD

Thank you for buying our software! We've put a lot of hard work, dedication and passion into our product. We hope you have fun working with ARCHICAD, and we'll do everything we can to make it your favorite design tool. If you have any questions, feel free to contact us!



GRAPHISOFT HQ, Budapest, Hungary, Epitesz Studio - [www.epstudio.hu](http://www.epstudio.hu)

ARCHICAD is a Building Information Modeling [BIM] tool for architects. With ARCHICAD, you can work in 3D or in 2D, on floor plans, sections or elevations. In any case, you are working on an integrated 3D model in which drawings and the model are interlinked, and you can modify any detail in the view of your choice.

Working this way offers a variety of benefits:

- Better design decisions thanks to instant feedback on your design changes
- Increased productivity due to automatic documentation and quantity take-offs
- Reduced errors as a result of model-coordinated construction documentation
- Embedding and linking of vital information such as vendors for specific materials

... and much more, but perhaps most importantly: a new and fun way of working that allows you to immerse yourself in the creative flow of architectural design.

[graphisoft.com/archicad](http://graphisoft.com/archicad)



Accessible with ARCHICAD FULL version only

By design, GRAPHISOFT BIMcloud is suited for even the most stringent enterprise-level workflow and security requirements, providing solutions to the collaboration issues of companies where collaboration is a mission-critical part of conducting everyday business. Advanced user role management, LDAP support and additional features offer the ideal solution at larger and/or geographically dispersed teams.

[graphisoft.com/bimcloud](http://graphisoft.com/bimcloud)

# BIMx

BIMx is a BIM-based design communication tool, creating interactive presentations for projects of any size on mobile devices and in common Internet browsers. No more paper documentation to carry around. Take along your big projects on a small device. Easy access for your team to all of your BIMcloud projects — anywhere, anytime.



Villa Funk, Frode Saltkjelvik, GRAPHISOFT Norway

BIMx is compatible with Google Cardboard VR 2.0, allowing a rich, immersive experience of building design on iOS and Android smart phones.



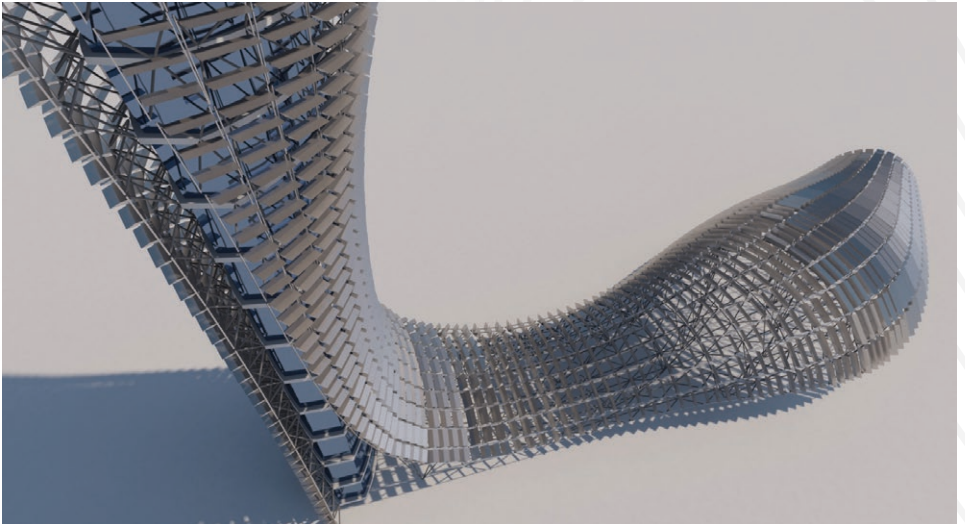
Multi-award winning BIMx embraces a unique Hyper-model technology for integrated 2D and 3D building project navigation. Even the most complex and extensive models published from GRAPHISOFT ARCHICAD can be presented on mobile devices or in an Internet browser, replacing ordinary design and construction viewer apps. Intelligent Markers in the model represent hyperlinks to the 2D layout sheets. Hyper-models can be shared with anybody using a link or integrated on the architect's own website.

BIMx is not only a great presentation tool but also takes advantage of the GRAPHISOFT BIMcloud infrastructure. Team messaging, redlining and photo attachments all serve to bridge the gap between the design office and on-site professionals resulting in a real-time, continuous BIM workflow. From the architect's desk to on-site coordination, take your design with you wherever you go!

[graphisoft.com/bimx](http://graphisoft.com/bimx)

# Algorithmic Design

The **Rhino-Grasshopper-ARCHICAD Toolset** connects the best tools for the different design stages and closes the gap between early stage parametric design and Building Information Modeling.



Render of the ARCHICAD model | © Michele Calvano and Mario Sacco, ArchiRADAR

A free add-on enables Rhino/Grasshopper and ARCHICAD to communicate directly in order to create and manipulate a BIM model in full or in part, through Grasshopper's visual scripting interface. The toolset offers solutions for seamless, bi-directional geometry transfer as well as a way to translate basic geometrical shapes into full BIM elements while adding algorithmic editing functionality.

Designers whose work is currently based on either Rhino/Grasshopper or ARCHICAD can leverage its functionality to their advantage. The live, associative, and bi-directional nature of the connection enables users to build versatile workflows and utilize the connection in multiple scenarios — using either Apple Mac OS or Microsoft Windows operating systems.

# Collaboration with Engineers

GRAPHISOFT has long been the promoter and supporter of the OPEN BIM workflow, which is a universal approach to the collaborative design, realization, and operation of buildings based on open standards. ARCHICAD offers best-in-class coordination workflows with industry leading Engineering Software solutions based upon OPEN BIM workflows:



- OPEN BIM supports transparent, open workflows, allowing project members to participate regardless of the software tools they use. The reference model workflows also respect the liability of each stakeholder in the process.
- OPEN BIM creates a common language for widely-referenced processes, allowing industry and government to procure projects with transparent commercial engagement, comparable service evaluation and assured data quality.
- OPEN BIM provides enduring project data for use throughout the asset life-cycle, avoiding multiple input of the same data and the resulting errors.
- Small and large (platform) software vendors can participate and compete on system-independent, “best of breed” solutions.
- OPEN BIM energizes the online product supply side with more exact user demand searches and delivers the product data directly into the BIM.



# GRAPHISOFT Software Services

The GRAPHISOFT Software Service Agreement (SSA) maximizes the value of your software investment. With SSA, you have immediate access to all the product innovations with the added security provided by professional services like training, support and license insurance. SSA includes:

#1

## Free Upgrades

While your SSA contract is active, you will receive all product updates without any additional fees. You will benefit from the latest product innovations from day one, while saving money compared to buying just the upgrades.

#2

## Technical Support

Get access to expert help through the phone, email, or screen-to-screen, enjoying priority service at all times.

#3

## Keyplug replacement

We have you covered!  
Your hardware keyplug is insured for theft or damage.

#4

## Free tools and libraries

Enjoy access to our vast surface material catalogs, as well as other objects and add-ons [content varies from country to country].

#5

## Private storage on BIMx transfer site

Share your BIMx Hyper-models with your clients privately through the BIMx transfer site. SSA gives you 5GB of private storage.

#6

## Product and Service Discounts

Enjoy discounts on additional software and training. Access free SSA-only webinars and newsletters.

The exact content of SSA varies from country to country.  
Check local offers with your GRAPHISOFT distributor partner:

[graphisoft.com/info/where\\_to\\_buy/](http://graphisoft.com/info/where_to_buy/)

# Training & Support Resources

GRAPHISOFT offers numerous training courses from beginner to expert level to help you unlock the full capabilities of ARCHICAD. All our courses have been designed by ARCHICAD experts to ensure that you quickly become productive with our software.



## Webinars

[graphisoft.com/learning/online-seminars/](https://graphisoft.com/learning/online-seminars/)



## GRAPHISOFT Help Center

[helpcenter.graphisoft.com](https://helpcenter.graphisoft.com)



## Online training

[graphisoft.com/learning/training-materials/](https://graphisoft.com/learning/training-materials/)



## ARCHICAD-Talk

[archicad-talk.graphisoft.com](https://archicad-talk.graphisoft.com)



## Online test

[graphisoft.com/learning/online\\_certification/](https://graphisoft.com/learning/online_certification/)



## YouTube channel

[youtube.com/archicad](https://youtube.com/archicad)



## Classroom training

[graphisoft.com/info/where\\_to\\_buy/](https://graphisoft.com/info/where_to_buy/)



## Customer Support

[graphisoft.com/info/where\\_to\\_buy/](https://graphisoft.com/info/where_to_buy/)